

AUSTRALIAN PRODUCT INFORMATION - LIPITOR® (ATORVASTATIN CALCIUM)

1. NAME OF THE MEDICINE

atorvastatin (as calcium)

2. QUALITATIVE AND QUANTITATIVE COMPOSITION

Each 10 mg tablet contains atorvastatin calcium equivalent to 10 mg atorvastatin

Each 20 mg tablet contains atorvastatin calcium equivalent to 20 mg atorvastatin

Each 40 mg tablet contains atorvastatin calcium equivalent to 40 mg atorvastatin

Each 80 mg tablet contains atorvastatin calcium equivalent to 80 mg atorvastatin

Excipients with known effect

- Lactose monohydrate

For the full list of excipients, see section 6.1, List of excipients.

3. PHARMACEUTICAL FORM

LIPITOR is supplied as white, round, film-coated tablets. Each tablet is debossed with the tablet strength on one side and 'ATV' on the other as follows:

10 mg: debossed '10' on one side and 'ATV' on the other.

20 mg: debossed '20' on one side and 'ATV' on the other.

40 mg: debossed '40' on one side and 'ATV' on the other.

80 mg: debossed '80' on one side and 'ATV' on the other.

4. CLINICAL PARTICULARS

4.1 Therapeutic indications

LIPITOR is indicated as an adjunct to diet for the treatment of patients with hypercholesterolaemia.

Prior to initiating therapy with atorvastatin, secondary causes of hypercholesterolaemia (e.g. poorly controlled diabetes mellitus, hypothyroidism, nephrotic syndrome, dysproteinaemias, obstructive liver disease, other drug therapy, and alcoholism) should be identified and treated.

LIPITOR is indicated in hypertensive patients with multiple risk factors for coronary heart disease (CHD) which may include diabetes, history of stroke or other cerebrovascular disease, peripheral vascular disease or existing asymptomatic CHD (see section 5.1, Pharmacodynamic properties, Clinical trials, Prevention of Cardiovascular Disease) to reduce the risk of non-fatal myocardial infarction (MI) and non-fatal stroke.

These effects do not replace the need to independently control known causes of cardiovascular (CV) mortality and morbidity such as hypertension, diabetes and smoking.

4.2 Dose and method of administration

Dosage

LIPITOR can be administered within the dosage range of 10 mg to 80 mg/day as a single daily dose. Therapy should be individualised according to the target lipid levels, the recommended goal of therapy and the patient's response. After initiation and/or upon titration of LIPITOR, lipid levels should be re-analysed within 4 weeks and dosage adjusted according to the patient's response.

Primary Hypercholesterolaemia and Mixed Dyslipidaemia

The majority of patients are controlled with 10 mg LIPITOR once daily. A therapeutic response is evident within 2 weeks, and the maximum response is usually achieved within 4 weeks. The response is maintained during chronic therapy.

Method of administration

LIPITOR is for oral administration. It can be taken at any time of the day, with or without food.

Dosage adjustment

Homozygous Familial Hypercholesterolaemia

Adults

In the compassionate-use study of patients with homozygous familial hypercholesterolaemia, most patients responded to 80 mg LIPITOR with a greater than 15% reduction in LDL-C (18%-42%).

Children

Treatment experience in a paediatric population (with doses of LIPITOR up to 80 mg/day) is limited.

Use in Renal Impairment

Renal disease has no influence on plasma concentrations or on LDL-C reduction of atorvastatin; thus, no dose adjustment is required (see sections 4.4, Special warnings and precautions for use and 5.1, Pharmacodynamic properties).

Use in Hepatic Impairment

Plasma concentrations of atorvastatin are markedly increased in patients with chronic alcoholic liver disease (Childs-Pugh B). The benefits of therapy should be weighed against the risks when atorvastatin is to be given to patients with hepatic insufficiency (see sections 4.3, Contraindications, 4.4, Special warnings and precautions for use, Liver Dysfunction and 5.1, Pharmacodynamic properties).

Use in Combination with Other Medicinal Compounds

In cases where co-administration of atorvastatin with ciclosporin, telaprevir or the combination tipranavir/ritonavir is necessary, the dose of atorvastatin should not exceed 10 mg.

Use of atorvastatin is not recommended in patients taking letermovir co-administered with ciclosporin.

Caution should be used when co-prescribing atorvastatin with medicinal compounds that result in an increase in systemic concentrations of atorvastatin, such as elbasvir/grazoprevir and simeprevir, and appropriate clinical assessment is recommended to ensure that the lowest dose of atorvastatin necessary is employed (see section 4.4, Special warnings and precautions for use, Skeletal Muscle and section 4.5, Interactions with other medicines and other forms of interactions).

4.3 Contraindications

Hypersensitivity to any component of this medication.

Active liver disease or unexplained persistent elevations of serum transaminases (see section 4.4, Special warnings and precautions for use, Liver Dysfunction).

Pregnancy and lactation (see section 4.6, Fertility, pregnancy and lactation, Use in Pregnancy and Use in Lactation). Women of childbearing potential, unless on an effective contraceptive and highly unlikely to conceive.

Concomitant use with fusidic acid (see section 4.4, Special warnings and precautions for use, Skeletal Muscle and section 4.5, Interactions with other medicines and other forms of interactions).

Treatment with the Hepatitis C antivirals, glecaprevir/pibrentasvir.

4.4 Special warnings and precautions for use

Liver Dysfunction

As with other lipid-lowering agents of the same class, moderate (>3 x upper limit of normal [ULN]) elevations of serum transaminases have been reported following therapy with atorvastatin.

Persistent increases in serum transaminases >3 x ULN occurred in 0.7% of patients who received atorvastatin in clinical trials. The incidence of these abnormalities was 0.2, 0.2, 0.6 and 2.3% for the 10 mg, 20 mg, 40 mg and 80 mg doses respectively. Increases were generally

not associated with jaundice or other clinical signs or symptoms. When the dosage of atorvastatin was reduced, or drug treatment interrupted or discontinued, transaminase levels returned to pre-treatment levels. Most patients continued treatment on a reduced dose of LIPITOR without sequelae.

Liver function tests should be performed before the initiation of treatment and periodically thereafter. Patients who develop increased transaminase levels should be monitored until the abnormalities resolve. Should an increase in ALT or AST of >3 x ULN persist, reduction of dose or withdrawal of LIPITOR is recommended.

Use in hepatic impairment

LIPITOR should be used with caution in patients who consume substantial quantities of alcohol and/or have a history of liver disease. Active liver disease or unexplained persistent transaminase elevations are contraindications to the use of atorvastatin (see section 4.3, Contraindications).

Skeletal Muscle

Uncomplicated myalgia has been reported in atorvastatin-treated patients (see section 4.8, Adverse effects (undesirable effects)). Myopathy, defined as muscle ache or muscle weakness in conjunction with increases in creatine kinase (CK) values >10 x ULN, should be considered in any patient with diffuse myalgias, muscle tenderness or weakness and/or marked elevation of CK. Patients should be advised to report promptly unexplained muscle pain, tenderness or weakness, particularly if accompanied by malaise or fever. LIPITOR therapy should be discontinued if markedly elevated CK levels occur or if myopathy is diagnosed or suspected.

The risk of myopathy is increased with concurrent administration of drugs that increase the systemic concentration of atorvastatin (see section 4.2, Dose and method of administration and 4.5, Interactions with other medicines and other forms of interactions). Physicians considering combined therapy with LIPITOR and fibric acid derivatives, erythromycin, immunosuppressive drugs, azole antifungals, HIV/HCV protease inhibitors, letermovir, or lipid-lowering doses of niacin should carefully weigh the potential benefits and risks and should carefully monitor patients for any signs and symptoms of muscle pain, tenderness, or weakness, particularly during the initial months of therapy and during any periods of upward dosage titration of either drug. Therefore, lower starting and maintenance doses of atorvastatin should also be considered when taken concomitantly with the aforementioned drugs (see section 4.2, Dose and method of administration, Use in Combination with Other Medicinal Compounds).

There have been reports of rhabdomyolysis (including some fatalities) in patients receiving concomitant fusidic acid and statins (see sections 4.3, Contraindications and 4.5, Interactions with other medicines and other forms of interactions). In patients where the use of systemic fusidic acid is considered essential, statin treatment should be discontinued throughout the duration of the fusidic acid treatment. The patient should be advised to seek medical advice immediately if they experience any symptoms of muscle weakness, pain or tenderness. Statin therapy may be re-introduced seven days after the last dose of fusidic acid.

Periodic CK determinations may be considered in such situations, although there is no assurance that such monitoring will prevent the occurrence of severe myopathy (see section 4.4, Special warnings and precautions for use, Effects on Laboratory Tests).

As with other drugs in this class, rhabdomyolysis with acute renal failure has been reported. A history of renal impairment may be a risk factor for the development of rhabdomyolysis. Such patients merit closer monitoring for skeletal muscle effects. LIPITOR therapy should be temporarily withheld or discontinued in any patient with an acute, serious condition suggestive of a myopathy or with a risk factor predisposing to the development of renal failure secondary to rhabdomyolysis, (e.g. severe acute infection; hypotension; major surgery; trauma; severe metabolic, endocrine and electrolyte disorders; and uncontrolled seizures).

Immune Mediated Necrotising Myopathy

There have been rare reports of an immune-mediated necrotising myopathy (IMNM) during or after treatment with some statins. IMNM is clinically characterised by persistent proximal muscle weakness and elevated serum creatinine kinase, which persists despite discontinuation of statin treatment.

Haemorrhagic Stroke

A post-hoc analysis of a clinical study (SPARCL) in patients without known coronary heart disease who had a recent stroke or transient ischaemic attack (TIA), showed a higher incidence of haemorrhagic stroke in patients on atorvastatin 80 mg (55/2365, 2.3%) compared to placebo (33/2366, 1.4%), ($p=0.02$). Throughout the study, all cause mortality was numerically higher in the atorvastatin arm than the placebo arm. At study end all cause mortality was 9.1% on atorvastatin vs. 8.9% on placebo.

The increased risk of haemorrhagic stroke was observed in patients who entered the study with prior haemorrhagic stroke (15.6% for atorvastatin vs. 4.2% for placebo, hazard ratio (HR) 4.06; 95% CI 0.84-19.57) or prior lacunar infarct (2.8% for atorvastatin vs. 0.6% for placebo, HR 4.99; 95% CI 1.71-14.61). All cause mortality was also increased in these patients with prior haemorrhagic stroke (15.6% for atorvastatin vs. 10.4% for placebo) or prior lacunar infarct (10.9% for atorvastatin vs. 9.1% for placebo). The potential risk of haemorrhagic stroke should be carefully considered before initiating treatment with atorvastatin in patients with recent (1-6 months) stroke or TIA.

In 68% of patients who entered the study with neither a haemorrhagic stroke nor lacunar infarct, the risk of haemorrhagic stroke on atorvastatin vs. placebo was 2% vs. 1.8% (large vessel), 1.7% vs. 1.6% (TIA), 1.6% vs. 1.7% (unknown cause).

Endocrine Function

3-hydroxy-3-methylglutaryl-coenzyme A (HMG-CoA) reductase inhibitors interfere with cholesterol synthesis and theoretically may blunt adrenal and/or gonadal steroid production. Clinical studies have shown that atorvastatin does not reduce basal plasma cortisol concentration nor impair adrenal reserve. The effects of HMG-CoA reductase inhibitors on male fertility have not been studied in adequate numbers of patients. The effects, if any, on the pituitary gonadal axis in pre-menopausal women are unknown. Caution should be exercised if an HMG-CoA reductase inhibitor is administered concomitantly with other drugs that may decrease the levels or activity of endogenous steroid hormones such as ketoconazole, spironolactone and cimetidine.

Increases in haemoglobin A1c (HbA1c) and fasting serum glucose levels have been reported with HMG-CoA reductase inhibitors, including atorvastatin.

Effect on Ubiquinone Levels (COQ₁₀)

Significant decreases in circulating ubiquinone levels in patients treated with atorvastatin and other statins have been observed. The clinical significance of a potential long-term, statin-induced deficiency of ubiquinone has not been established.

Effect on Lipoprotein (a)

Like other HMG-CoA reductase inhibitors, atorvastatin has variable effects on lipoprotein (a) (Lp (a)). It is unclear whether the beneficial effects of lowering LDL-C and total cholesterol in some patients may be blunted by raised Lp (a) levels.

Interstitial Lung Disease

Exceptional cases of interstitial lung disease have been reported with some statins, especially with long term therapy (see section 4.8, Adverse effects (undesirable effects)). Presenting features can include dyspnoea, non-productive cough and deterioration in general health (fatigue, weight loss and fever). If it is suspected a patient has developed interstitial lung disease, statin therapy should be discontinued.

Paediatric Use

Treatment experience in a paediatric population is limited to doses of atorvastatin up to 80 mg/day for 1 year in 8 patients with homozygous FH. No clinical or biochemical abnormalities were reported in these patients.

Use in the Elderly

Treatment experience in adults aged ≥70 years with doses of atorvastatin up to 80 mg/day has been evaluated in 221 patients. The safety and efficacy of atorvastatin in this population were similar to those of patients <70 years of age.

Effects on Laboratory Tests

LIPITOR can cause elevations in ALT/AST, alkaline phosphatase, GGT, bilirubin and creatine kinase.

4.5 Interactions with other medicines and other forms of interactions

Atorvastatin is metabolised by cytochrome P450 3A4 (CYP 3A4).

Concomitant administration of atorvastatin with inhibitors of CYP 3A4 can lead to increases in plasma concentrations of atorvastatin. The extent of interaction and potentiation of effects depends on the variability of effect on CYP 3A4. Pharmacokinetic drug interactions that result in increased systemic concentration of atorvastatin have also been noted with other human immunodeficiency virus (HIV) protease inhibitors (fosamprenavir and combinations of lopinavir/ritonavir, saquinavir/ritonavir, darunavir/ritonavir, fosamprenavir/ritonavir), hepatitis C (HCV) protease inhibitors (boceprevir, elbasvir/grazoprevir, simeprevir), clarithromycin, itraconazole, and letermovir. Based on experience with other HMG-CoA reductase inhibitors, caution should be exercised when LIPITOR is administered with inhibitors of CYP 3A4 (e.g. ciclosporin, macrolide antibiotics including erythromycin and

azole antifungals including itraconazole). The risk of myopathy during treatment with other HMG-CoA reductase inhibitors is increased with concurrent administration of ciclosporin, fibric acid derivatives, erythromycin, azole antifungals, or niacin (see section 4.2, Dose and method of administration, Use in Combination with Other Medicinal Compounds and section 4.4, Special warnings and precautions for use, Skeletal Muscle).

Concomitant administration of atorvastatin with inducers of CYP 3A4 (e.g. efavirenz, rifampicin, phenytoin) can lead to variable reductions in plasma concentrations of atorvastatin. Due to the dual interaction mechanism of rifampicin (CYP 3A4 induction and inhibition of hepatocyte uptake transporter (OATP1B1)), simultaneous co-administration of atorvastatin with rifampicin is recommended, as delayed administration of atorvastatin after administration of rifampicin has been associated with a significant reduction in atorvastatin plasma concentrations.

Fusidic Acid

The risk of myopathy including rhabdomyolysis may be increased by the concomitant administration of systemic fusidic acid with statins. Co-administration of this combination may cause increased plasma concentrations of both agents. The mechanism of this interaction (whether it is pharmacodynamics or pharmacokinetic, or both) is yet unknown.

Although interaction studies with atorvastatin and fusidic acid have not been conducted, there have been reports of rhabdomyolysis (including some fatalities) in patients receiving this combination. If treatment with fusidic acid is necessary, statin treatment should be discontinued throughout the duration of the fusidic acid treatment (see section 4.3, Contraindications and section 4.4, Special warnings and precautions for use, Skeletal Muscle).

Colchicine

Although interaction studies with atorvastatin and colchicine have not been conducted, cases of myopathy have been reported with atorvastatin co-administered with colchicine, and caution should be exercised when prescribing atorvastatin with colchicine (see section 4.4, Special warnings and precautions for use, Skeletal Muscle).

Effects of Other Medicines on LIPITOR

The following drugs have been shown to have an effect on the pharmacokinetics or pharmacodynamics of LIPITOR:

Antacid

Co-administration of an oral antacid suspension containing magnesium and aluminium hydroxides with atorvastatin decreased atorvastatin plasma concentrations approximately 35%, however, LDL-C reduction was not altered.

Colestipol

Plasma concentrations of atorvastatin were lower (approximately 25%) when colestipol and atorvastatin were co-administered. However, LDL-C reduction was greater when atorvastatin and colestipol were co-administered than when either drug was given alone.

Transporter Inhibitors

Atorvastatin is a substrate of the hepatic transporters (see section 5.2, Pharmacokinetic properties).

Concomitant administration of atorvastatin 10 mg and ciclosporin 5.2 mg/kg/day resulted in an increase in exposure to atorvastatin. Ciclosporin is an inhibitor of organic anion-transporting polypeptide 1B1 (OATP1B1), OATP1B3, multi-drug resistance protein 1 (MDR1), and breast cancer resistance protein (BCRP) as well as CYP 3A4, thus it increases exposure to atorvastatin. Do not exceed 10 mg atorvastatin daily (see section 4.2, Dose and method of administration: Use in Combination with Other Medicinal Compounds).

Glecaprevir and pibrentasvir are inhibitors of OATP1B1, OATP1B3, MDR1 and BCRP, thus they increase exposure to atorvastatin. Co-administration of atorvastatin with products containing glecaprevir or pibrentasvir is contraindicated (see section 4.3, Contraindications).

Concomitant administration of atorvastatin and letermovir resulted in an increase in exposure to atorvastatin. Letermovir inhibits efflux transporters P-gp, BCRP, MRP2, OAT2 and hepatic transporter OATP1B1/1B3, thus it increases exposure to atorvastatin (see section 4.2, Dose and method of administration, Use in Combination with Other Medicinal Compounds).

The magnitude of CYP3A- and OATP1B1/1B3-mediated drug interactions on co-administered drugs may be different when letermovir is co-administered with ciclosporin. Use of atorvastatin is not recommended in patients taking letermovir co-administered with ciclosporin.

Elbasvir and grazoprevir are inhibitors of OATP1B1, OATP1B3, MDR1 and BCRP, thus they increase exposure to atorvastatin. Use with caution and lowest dose necessary (see section 4.2, Dose and method of administration, Use in Combination with Other Medicinal Compounds).

Erythromycin/Clarithromycin

In healthy individuals, co-administration of atorvastatin (10 mg once daily) with erythromycin (500 mg four times a day), or clarithromycin (500 mg twice daily), known inhibitors of CYP 3A4, was associated with higher plasma concentrations of atorvastatin (see section 4.4, Special warnings and precautions for use, Skeletal Muscle).

Protease Inhibitors

Co-administration of atorvastatin with protease inhibitors, known inhibitors of CYP 3A4, was associated with increased plasma concentrations of atorvastatin (see section 4.4, Special warnings and precautions for use, Skeletal Muscle).

Diltiazem Hydrochloride

Co-administration of atorvastatin (40 mg) with diltiazem (240 mg) was associated with higher plasma concentrations of atorvastatin.

Itraconazole

Concomitant administration of atorvastatin (20-40 mg) and itraconazole (200 mg) was associated with an increase in atorvastatin AUC.

Grapefruit Juice

Contains one or more components that inhibit CYP 3A4 and can increase plasma concentrations of atorvastatin, especially with excessive grapefruit juice consumption (>1.2 L/day).

Effects of LIPITOR on Other Medicines

The following medicines have been shown to have their pharmacokinetics or pharmacodynamics affected by LIPITOR:

Digoxin

When multiple doses of digoxin (0.25 mg once daily) and 10 mg atorvastatin were co-administered, steady-state plasma digoxin concentrations were unaffected. However, steady-state plasma digoxin concentrations increased by approximately 20% following administration of digoxin with 80 mg atorvastatin daily. Patients taking digoxin should be monitored appropriately.

Oral Contraceptives

Co-administration of atorvastatin with an oral contraceptive containing norethindrone and ethinyl oestradiol increased AUC values for norethindrone and ethinyl oestradiol by approximately 30% and 20%. These increases should be considered when selecting an oral contraceptive for a woman taking atorvastatin.

Medicines Shown Not to Interact with LIPITOR

Cimetidine

Atorvastatin plasma concentrations and LDL-C reduction were not altered by co-administration of cimetidine.

Warfarin

Atorvastatin had no clinically significant effect on prothrombin time when administered to patients receiving chronic warfarin treatment.

Amlodipine

Atorvastatin pharmacokinetics were not altered by the co-administration of atorvastatin 80 mg daily with amlodipine 10 mg daily at steady-state. In a drug-drug interaction study in healthy subjects, co-administration of atorvastatin 80 mg and amlodipine 10 mg resulted in an 18% increase in exposure to atorvastatin which was not clinically meaningful.

Azithromycin

Co-administration of atorvastatin (10 mg daily) with azithromycin (500 mg once daily) did not alter the plasma concentrations of atorvastatin.

Other Concomitant Therapy

In clinical studies, atorvastatin was used concomitantly with antihypertensive agents and oestrogen replacement therapy without evidence of clinically significant adverse interactions. Interaction studies with all specific agents have not been conducted.

4.6 Fertility, pregnancy and lactation

Effects on Fertility

The effects of atorvastatin on spermatogenesis and human fertility have not been investigated in clinical studies. Dietary administration of 100 mg atorvastatin/kg/day to rats caused a decrease in spermatid concentration in the testes, a decrease in sperm motility and an increase in sperm abnormalities. Similar effects, however, were not observed in male rats dosed by gavage to 175 mg/kg/day (plasma AUC for HMG-CoA reductase inhibitory activity 14 times higher than in humans dosed at 80 mg/day) and male fertility was not affected in either study. No adverse effects on fertility or reproduction were observed in female rats given doses up to 225 mg/kg/day (plasma AUC for enzyme inhibitory activity 56 times higher than in humans dosed at 80 mg/day). Atorvastatin caused no adverse effects on sperm or semen parameters, or on reproductive organ histopathology in dogs given doses of 10 mg/kg, 40 mg/kg or 120 mg/kg for 2 years (plasma AUC for enzyme inhibitory activity 13 times higher than in humans).

Use in Pregnancy - Category D.

The definition of Pregnancy Category D is drugs which have caused, are suspected to have caused or may be expected to cause, an increased incidence of human foetal malformations or irreversible damage. These drugs may also have adverse pharmacological effects.

Atorvastatin is contraindicated in pregnancy. Atherosclerosis is a chronic process and discontinuation of lipid-lowering drugs during pregnancy should have little impact on the outcome of long-term therapy of primary hypercholesterolaemia. Cholesterol and other products of cholesterol biosynthesis are essential components for foetal development (including synthesis of steroids and cell membranes). Since HMG-CoA reductase inhibitors decrease cholesterol synthesis and possibly the synthesis of other biologically active substances derived from cholesterol, they may cause foetal harm when administered to pregnant women. LIPITOR should be administered to women of childbearing age only when such patients are highly unlikely to conceive and have been informed of the potential. If the patient becomes pregnant while taking this drug, therapy should be discontinued and the patient apprised of the potential hazard to the foetus (see section 4.3, Contraindications).

Atorvastatin crosses the rat placenta and reaches a level in foetal liver equivalent to that in maternal plasma. Animal reproduction studies showed no evidence of teratogenic activity in rats or rabbits at oral doses up to 300 mg/kg/day and 100 mg/kg/day, respectively. Increased post-implantation loss, decreased foetal weight and increased skeletal variations were observed in rats dosed at 100–300 mg/kg/day and rabbits dosed at 50–100 mg/kg/day. In a peri/post-natal study, rats dosed at 225 mg/kg/day showed an increased incidence of stillbirths, decreases in birthweight, an increased incidence of dilated renal pelvis, increased postnatal mortality, suppression of pup growth, retardation of physical development and abnormal behavioural development; some of these effects were also observed at the non-maternotoxic dose of

100 mg/kg/day; the plasma AUC for HMG-CoA reductase inhibitory activity at the no effect dose level of 20 mg/kg/day was similar to that in humans dosed at 80 mg/day.

HMG-CoA reductase inhibitors are contraindicated in pregnancy. The risk of foetal injury outweighs the benefits of HMG-CoA reductase inhibitor therapy during pregnancy.

In two series of 178 and 143 cases where pregnant women took a HMG-CoA reductase inhibitor (statin) during the first trimester of pregnancy, serious foetal abnormalities occurred in several cases. These included limb and neurological defects, spontaneous abortions and foetal deaths. The exact risk of injury to the foetus occurring after a pregnant woman is exposed to HMG-CoA reductase inhibitor has not been determined. The current data do not indicate that the risk of foetal injury in women exposed to HMG-CoA reductase inhibitors is high. If a pregnant woman is exposed to a HMG-CoA reductase inhibitor she should be informed of the possibility of foetal injury and discuss the implications with her pregnancy specialist.

Use in Lactation

It is not known whether this drug is excreted in human milk. In rats, plasma concentrations of atorvastatin are similar to those in milk. Because of the potential for adverse reactions in nursing infants, women taking LIPITOR should not breast-feed (see sections 4.3, Contraindications and 4.4, Special warnings and precautions for use).

4.7 Effects on ability to drive and use machines

The effects of this medicine on a person's ability to drive and use machines were not assessed as part of its registration.

4.8 Adverse effects (undesirable effects)

LIPITOR is generally well tolerated. Adverse events have usually been mild and transient.

Clinical Adverse Events

In the atorvastatin placebo-controlled clinical trial database of 16,066 patients (8,755 atorvastatin; 7,311 placebo), treated for a median period of 53 weeks, 5.2% of patients on atorvastatin discontinued due to adverse reactions compared to 4.0% of patients on placebo.

The most frequent ($\geq 1\%$) adverse events that may be associated with LIPITOR therapy, reported in patients participating in placebo-controlled clinical studies include:

Gastrointestinal disorders: dyspepsia, nausea, flatulence, diarrhoea.

Infections and infestations: nasopharyngitis.

Investigations: liver function test abnormal¹, blood creatine phosphokinase increased.

¹ Refers to the following preferred terms: hepatic enzyme increased, alanine aminotransferase increased, aspartate aminotransferase increased, blood bilirubin increased, liver function test abnormal and transaminases increased.

Metabolism and nutrition disorders: hyperglycaemia.

Musculoskeletal and connective tissue disorders: myalgia, arthralgia, pain in extremity, musculoskeletal pain, muscle spasms, joint swelling.

Respiratory, thoracic and mediastinal disorders: pharyngolaryngeal pain, epistaxis.

Additional Adverse Events

The following have been reported in clinical trials of atorvastatin, however, not all the events listed have been causally associated with atorvastatin therapy.

Common ($\geq 1\%$ and $< 10\%$)

Gastrointestinal disorders: constipation.

Infections and infestations: urinary tract infection.

Nervous system disorders: headache.

Uncommon ($\geq 0.1\%$ and $< 1\%$)

Ear and labyrinth disorders: deafness.

Eye disorders: vision blurred.

Gastrointestinal disorders: abdominal discomfort, abdominal pain, vomiting.

General disorders and administration site conditions: asthenia, malaise.

Infections and infestations: infection, influenza.

Metabolism and nutrition disorders: anorexia.

Musculoskeletal and connective tissue disorders: back pain, neck pain.

Nervous system disorders: paraesthesia.

Psychiatric disorders: insomnia, nightmare.

Reproductive system and breast disorders: erectile dysfunction.

Respiratory, thoracic and mediastinal disorders: asthma.

Skin and subcutaneous tissue disorders: rash, pruritus, urticaria.

Rare ($\geq 0.01\%$ and $< 0.1\%$)

Ear and labyrinth disorders: tinnitus.

Gastrointestinal disorders: pancreatitis, eructation.

General disorders and administration site conditions: pyrexia.

Hepatobiliary disorders: hepatitis, cholestasis.

Immune system disorders: hypersensitivity (including anaphylaxis).

Infections and infestations: sinusitis, pharyngitis.

Injury, poisoning and procedural complications: injury.

Investigations: white blood cells urine positive.

Metabolism and nutrition disorders: hypoglycaemia.

Musculoskeletal and connective tissue disorders: myositis, myopathy, muscle fatigue.

Nervous system disorders: peripheral neuropathy.

Skin and subcutaneous tissue disorders: angioedema, alopecia.

A post-hoc analysis of a clinical study (SPARCL) in patients without known coronary heart disease who had a recent stroke or TIA, showed an increased risk of haemorrhagic stroke in patients with prior haemorrhagic stroke or prior lacunar infarct (see section 4.4, Special warnings and precautions for use).

In ASCOT (see section 5.1, Pharmacodynamic properties, Clinical trials, Prevention of Cardiovascular Disease) involving 10,305 participants treated with LIPITOR 10 mg daily (n=5,168) or placebo (n=5,137), the safety and tolerability profile of the group treated with LIPITOR was comparable to that of the group treated with placebo during a median of 3.3 years of follow-up.

Post-Marketing Experience

Rare adverse events that have been reported post-marketing which are not listed above, regardless of causality, include the following:

Blood and lymphatic system disorders: thrombocytopenia.

General disorders and administration site conditions: chest pain, fatigue, peripheral oedema.

Hepatobiliary disorders: hepatic failure.

Injury, poisoning and procedural complications: tendon rupture.

Investigations: weight increased.

Musculoskeletal and connective tissue disorders: lupus-like syndrome, muscle rupture, immune mediated necrotising myopathy, rhabdomyolysis which may be fatal² (see sections

² Examples of signs and symptoms are muscle weakness, muscle swelling, muscle pain, dark urine, myoglobinuria, elevated serum creatine kinase, acute renal failure and cardiac arrhythmia.

4.3, Contraindications, 4.4, Special warnings and precautions for use and 4.5, Interactions with other medicines and other forms of interactions).

Nervous system disorders: hypoaesthesia, dizziness, amnesia, dysgeusia.

Reproductive system and breast disorders: gynaecomastia.

Skin and subcutaneous tissue disorders: bullous rashes (including erythema multiforme, Stevens-Johnson syndrome and toxic epidermal necrolysis).

The following adverse events have been reported with some statins: Exceptional cases of interstitial lung disease, especially with long term therapy (see section 4.4. Special warnings and precautions for use).

Reporting suspected adverse effects

Reporting suspected adverse reactions after registration of the medicinal product is important. It allows continued monitoring of the benefit-risk balance of the medicinal product. Healthcare professionals are asked to report any suspected adverse reactions at <https://www.tga.gov.au/reporting-problems>.

4.9 Overdose

There is no specific treatment for LIPITOR overdose. Should an overdose occur, the patient should be treated symptomatically, and supportive measures instituted as required. In symptomatic patients, monitor serum creatinine, BUN, creatinine phosphokinase and urine myoglobin for indications of renal impairment secondary to rhabdomyolysis. Liver function tests should be performed in symptomatic patients.

If there has been significant ingestion, consider administration of activated charcoal. Activated charcoal is most effective when administered within 1 hour of ingestion. In patients who are not fully conscious or have impaired gag reflex, consideration should be given to administering activated charcoal via nasogastric tube once the airway is protected. For rhabdomyolysis, administer sufficient 0.9% saline to maintain urine output of 2 to 3 mL/kg/hr. Diuretics may be necessary to maintain urine output. Urinary alkalisation is not routinely recommended. Due to extensive drug binding to plasma proteins, haemodialysis is not expected to significantly enhance atorvastatin clearance.

For information on the management of overdose, contact the Poisons Information Centre on 13 11 26 (Australia).

5. PHARMACOLOGICAL PROPERTIES

5.1 Pharmacodynamic properties

Mechanism of Action

Atorvastatin is a synthetic lipid-lowering agent. Atorvastatin is an inhibitor of HMG-CoA reductase, the rate-limiting enzyme that converts HMG-Co-A to mevalonate, a precursor of sterols, including cholesterol. Triglycerides (TG) and cholesterol in the liver are incorporated

into very low density lipoprotein (VLDL) and released into the plasma for delivery to peripheral tissues. Low density lipoprotein (LDL) is formed from VLDL and is catabolised primarily through the high affinity LDL receptor.

Atorvastatin lowers plasma cholesterol and lipoprotein levels by inhibiting HMG-CoA reductase and cholesterol synthesis in the liver and by increasing the number of hepatic LDL receptors on the cell-surface to enhance uptake and catabolism of LDL. Atorvastatin reduces LDL production and the number of LDL particles. Atorvastatin produces a marked and sustained increase in LDL receptor activity coupled with a beneficial change in the quality of circulating LDL particles.

A variety of clinical and pathologic studies have demonstrated that elevated cholesterol and lipoprotein levels of total cholesterol (total-C), low density lipoprotein cholesterol (LDL-C) and apolipoprotein B (apo B) promote human atherosclerosis and are risk factors for developing cardiovascular disease. Similarly, decreased levels of high density lipoprotein cholesterol (HDL-C) are associated with the development of atherosclerosis. Epidemiological investigations have established that CV morbidity and mortality vary directly with the level of total-C and LDL-C and inversely with the level of HDL-C.

Atorvastatin reduces total-C, LDL-C, and apo B in both normal volunteers and in patients with homozygous and heterozygous familial hypercholesterolaemia (FH), non-familial forms of hypercholesterolaemia, and mixed dyslipidaemia. Atorvastatin also reduces very low density lipoprotein cholesterol (VLDL-C) and TG and produces variable increases in HDL-C and apolipoprotein A-1. Atorvastatin reduces total-C, LDL-C, VLDL-C, apo B and TG, and increases HDL-C in patients with isolated hypertriglyceridaemia. Atorvastatin reduces intermediate density lipoprotein cholesterol (IDL-C) in patients with dysbetalipoproteinaemia. In animal models, atorvastatin limits the development of lipid-enriched atherosclerotic lesions and promotes the regression of pre-established atheroma.

Pharmacodynamics

Atorvastatin and its metabolites are responsible for pharmacological activity in humans. The liver is its primary site of action and the principal site of cholesterol synthesis and LDL clearance. Drug dose rather than systemic drug concentration correlates better with LDL-C reduction. Individualisation of drug dose should be based on therapeutic response (see section 4.2, Dose and method of administration).

Clinical trials

In a multicentre, placebo-controlled, double blind dose-response study in patients with hypercholesterolaemia, atorvastatin was given as a single daily dose over 6 weeks. Atorvastatin (10-80 mg) reduced total-C (30%-46%), LDL-C (41%-61%), apolipoprotein B (34%-50%) and triglycerides (14%-33%) while producing variable increases in HDL-C and apolipoprotein A (Table 1). A therapeutic response was seen within 2 weeks, and maximum response achieved within 4 weeks.

Table 1 Dose-Response in Patients with Primary Hypercholesterolaemia^a

Atorvastatin dose (mg)	N	Total-C	LDL-C	Apo B	TG	HDL-C
Placebo	12	4.8	7.6	5.8	-0.7	-2.5
10	11	-30.3	-41.0	-34.4	-14.2	4.5
20	10	-34.5	-44.3	-36.3	-33.2	12.1
40	11	-37.8	-49.7	-40.9	-24.9	-2.6
80	11	-45.7	-61.0	-50.3	-27.2	3.4

^aAdjusted mean % change from baseline

In three further trials, 1,148 patients with either heterozygous familial hypercholesterolaemia, non-familial forms of hypercholesterolaemia, or mixed dyslipidaemia were treated with atorvastatin for one year. The results were consistent with those of the dose response study and were maintained for the duration of therapy.

In patients with primary hypercholesterolaemia and mixed dyslipidaemia (Fredrickson Types IIa and IIb), data pooled from 24 controlled trials demonstrated that the adjusted mean percent increases from baseline in HDL-C for atorvastatin (10–80 mg) were 5.0 to 7.8% in a non-dose-related manner.

Clinical studies demonstrate that the starting dose of 10 mg atorvastatin is more effective than simvastatin 10 mg and pravastatin 20 mg in reducing LDL-C, total-C, triglycerides and apo B. In several multicentre, double blind studies in patients with hypercholesterolaemia, atorvastatin was compared to other HMG-CoA reductase inhibitors. After randomisation, patients were treated with atorvastatin 10 mg per day or the recommended starting dose of the comparative agent. At week 16, a greater proportion of atorvastatin treated patients than those treated with simvastatin (46% vs. 27%) or pravastatin (65% vs. 19%) reached their target LDL-C levels. Increasing the dosage of atorvastatin resulted in more patients reaching target LDL-C goals.

Prevention of Cardiovascular Disease

In the lipid lowering arm of the Anglo-Scandinavian Cardiac Outcomes Trial (ASCOT), the effect of LIPITOR (atorvastatin calcium) on the composite endpoint of fatal CHD and non-fatal MI was assessed in 10,305 hypertensive patients, 40 to 79 years of age, without a history of symptomatic coronary heart disease and with total-C levels ≤ 6.5 mmol/L. Additionally patients were at moderate risk of coronary heart disease, having at least three of the predefined CV risk factors [male gender (81%), age ≥ 55 years (84%), smoking (33%), non-insulin dependent diabetes mellitus (25%), history of CHD in a first-degree relative (26%), plasma TC to HDL cholesterol ratio ≥ 6 (14%), peripheral vascular disease (5%), left ventricular hypertrophy on echocardiography (14%), past history of cerebrovascular event (10%), specific electrocardiogram (ECG) abnormality (14%), proteinuria/albuminuria (62%)]. Patients with a history of previous myocardial infarction or angina were excluded.

In this randomised, double blind, placebo-controlled study, patients were treated with anti-hypertensive therapy (goal BP $< 140/90$ mmHg for non-diabetic patients, $< 130/80$ mm Hg for diabetic patients) and either LIPITOR 10 mg daily (n=5,168) or placebo (n=5,137) and followed for a median duration of 3.3 years. At baseline, in the atorvastatin group, 38 patients (0.7%) had total-C levels less than 3.5 mmol/L; 2,340 patients (45.3%) had total-C levels

greater than or equal to 3.5 mmol/L and less than 5.5 mmol/L; 2,304 patients (44.6%) had total-C levels greater than or equal to 5.5 mmol/L and less than 6.5 mmol/L; and 486 patients (9.4%) had total-C levels greater than or equal to 6.5 mmol/L. At baseline, 457 patients (9.8%) in the atorvastatin group had LDL-C levels less than or equal to 2.5 mmol/L; 1,731 patients (37%) had LDL-C greater than 2.5 mmol/L and less than 3.4 mmol/L; and 2,495 patients (53.3%) had LDL-C levels greater than or equal to 3.4 mmol/L. Median (25th & 75th percentile) changes from baseline after 1 year of atorvastatin treatment in total-C, LDL-C, TG and HDL-C were -1.40 mmol/L (-1.80, -0.90), -1.27 mmol/L (-1.66, -0.84), -0.20 mmol/L (-0.60, 0.10) and 0.00 mmol/L (-0.10, 0.10). Blood pressure control throughout the trial was similar in patients assigned to atorvastatin and placebo.

Table 2 Summary of Risk Reductions in Primary Prevention Patients

Endpoint	Atorvastatin 10 mg N (%)	Placebo N (%)	Absolute Risk Reduction ^a % (95% CI)	Number Needed to Treat Per Year	Relative Risk Reduction % (95% CI)	P value
Primary						
Fatal CHD and Non-fatal MI	100 (1.9)	154 (3.0)	1.07 (0.47 to 1.67)	310.5	36 (17 to 50)	0.0005
Secondary						
Total Cardiovascular Events Including Revascularisation Procedures	389 (7.6)	483 (9.5)	1.9 (0.80 to 2.96)	176.0	20 (9 to 30)	0.0008
Total Coronary Events	178 (3.5)	247 (4.8)	1.4 (0.60 to 2.14)	241.9	29 (14 to 41)	0.0006
Fatal and Non-fatal Stroke ^b	89 (1.7)	119 (2.3)	0.6 (0.05 to 1.14)	555.2	26 (2 to 44)	0.0332
Non-fatal MI (excludes Silent MI) and Fatal CHD	86 (1.7)	137 (2.7)	1.0 (0.42 to 1.56)	329.1	38 (19 to 53)	0.0005

^aBased on difference in crude events rates occurring over a median follow-up of 3.3 years.

^bAlthough the reduction of fatal and non-fatal strokes did not reach a pre-defined significance level (p=0.01), a favourable trend was observed with a 26% relative risk reduction.

The primary endpoint examined in ASCOT was the rate of fatal coronary heart disease or non-fatal myocardial infarction over 3.3 years. These coronary events occurred in 1.9% of atorvastatin treated patients compared to 3% of placebo treated patients, a relative risk reduction of 36% (p=0.0005) (Table 2). Although this difference was statistically significant for the whole trial population, this difference was not statistically significant in specified subgroups such as diabetes, patients with left ventricular hypertrophy (LVH), previous vascular disease, or metabolic syndrome.

There was no statistically significant reduction in the rate of total mortality, CV mortality or heart failure in the atorvastatin treated group compared to placebo.

Non Insulin Dependent Diabetes Mellitus (NIDDM)

A 26 week randomised, double blind, comparator study in NIDDM subjects showed that atorvastatin is effective in dyslipidaemic patients with NIDDM. A 10 mg dose of atorvastatin

produced a 34% reduction in LDL-cholesterol, 27% reduction in total cholesterol, a 24% reduction in triglycerides and a 12% rise in HDL cholesterol.

Homozygous Familial Hypercholesterolaemia

LIPITOR has also been shown to reduce LDL-C in patients with homozygous familial hypercholesterolaemia, a population that has not usually responded to other lipid-lowering medication. In an uncontrolled compassionate-use study, 29 patients aged 6 to 37 years with homozygous familial hypercholesterolaemia received maximum daily doses of 20 to 80 mg of atorvastatin. The mean LDL reduction in this study was 18%. Twenty-five patients with a reduction in LDL-C had a mean response of 20% (range 7%-53%, median 24%). Five of the 29 patients had absent LDL-receptor function, three of whom responded to atorvastatin with a mean LDL-C reduction of 22%. Experience in paediatric patients has been limited to patients with homozygous FH.

Hypertriglyceridaemia

In patients with hypertriglyceridaemia (baseline TG ≥ 2.26 mmol/L and LDL-C < 4.14 mmol/L) LIPITOR (10 to 80 mg) reduced serum triglycerides by 31% to 40%.

In patients with severe hypertriglyceridaemia (baseline TG > 5.7 mmol/L), LIPITOR (10 to 80 mg) reduced serum triglycerides by 30% to 56%.

In a randomised, placebo-controlled, double blind, multicentre study in patients with hypertriglyceridaemia (TG ≥ 3.95 mmol/L, LDL-C ≤ 4.1 mmol/L), LIPITOR 20 mg/day and 80 mg/day produced significantly greater reductions in triglyceride levels than placebo (Table 3).

Table 3 Efficacy in Patients with Hypertriglyceridaemia^a

Atorvastatin Dose (mg)	N	TG	Total-C	LDL-C	VLDL-C	Apo B	HDL-C
Placebo	12	-5.3	+0.3	+1.4	-2.0	+2.7	+2.4
20	13	-33.6*	-33.1*	-31.1*	-46.0*	-32.7*	+10.6
80	11	-42.4*	-41.3*	-36.1*	-54.2*	-38.7*	+11.8*

^a Adjusted mean % change from baseline

* significantly different from placebo, $p < 0.05$

Dysbetalipoproteinaemia

In patients with dysbetalipoproteinaemia, LIPITOR (10 to 80 mg) reduced intermediate density lipoprotein (IDL-C) (range 28% to 52%) and IDL-C + VLDL-C (range 34% to 58%).

In an open-label, randomised, cross-over study in patients with dysbetalipoproteinaemia, treatment with LIPITOR 80 mg/day resulted in significantly greater mean percent decreases in IDL-C + VLDL-C, IDL-C, total-C, VLDL-C and Apo B than either simvastatin 40 mg/day or gemfibrozil 1200 mg/day and significantly greater mean percent decreases in triglycerides than simvastatin 40 mg/day (Table 4).

Table 4 Efficacy in Patients with Dysbetalipoproteinaemia^{a b}

Treatment	N	IDL-C+ VLDL-C	IDL-C	Total-C	TG	VLDL-C	Apo B	HDL-C
Atorvastatin 10 mg/day	15	-34	-28	-40	-40	-32	-47	+3
Atorvastatin 80 mg/day	16	-58	-50	-57	-56	-59	-66	+13
Gemfibrozil 1200 mg/day	15	-33*	-13* [#]	-34*	-52 [#]	-35*	-53*	+11
Simvastatin 40 mg/day	16	-28*	-27*	-41*	-36*	-26*	-52*	+1*

^aAdjusted mean % change from baseline

^bComparisons other than atorvastatin 80 mg/day versus simvastatin 40 mg/day were ad hoc

*Significantly different from atorvastatin 80 mg/day, p<0.05

[#]Significantly different from atorvastatin 10 mg/day, p<0.05

5.2 Pharmacokinetic properties

Absorption

Atorvastatin is rapidly absorbed after oral administration; maximum plasma concentrations occur within 1 to 2 hours. A constant proportion of atorvastatin is absorbed intact. The absolute bioavailability is 14%. The low systemic availability is attributed to pre-systemic clearance in gastrointestinal mucosa and/or hepatic first-pass metabolism. Although food decreases the rate and extent of drug absorption by approximately 25% and 9%, respectively, as assessed by C_{max} and AUC, LDL-C reduction is similar whether atorvastatin is given with or without food. Plasma atorvastatin concentrations are lower (approximately 30% for C_{max} and AUC) following evening drug administration compared to morning. However, LDL-C reduction is the same regardless of the time of day of drug administration (see section 4.2, Dose and method of administration).

Distribution

The mean volume of distribution of atorvastatin is about 400 litres. Atorvastatin is ≥98% bound to plasma proteins. A RBC/plasma ratio of approximately 0.25 indicates poor drug penetration into red blood cells. Based on observations in rats, atorvastatin is likely to be secreted in human milk (see section 4.4, Special warnings and precautions for use).

Metabolism

In humans, atorvastatin is extensively metabolised to ortho- and para-hydroxylated derivatives. *In vitro* inhibition of HMG-CoA reductase by ortho- and para-hydroxylated metabolites is equivalent to that of atorvastatin. Approximately 70% of circulating inhibitory activity for HMG-CoA reductase is attributed to active metabolites. *In vitro* studies suggest the importance of atorvastatin metabolism by CYP 3A4, consistent with increased plasma concentrations of atorvastatin in humans following co-administration with erythromycin, a known inhibitor of this isozyme (see section 4.4, Special warnings and precautions for use). In animals, the ortho-hydroxy metabolite undergoes further glucuronidation.

Excretion

Atorvastatin is eliminated primarily in bile following hepatic and/or extrahepatic metabolism; however, the drug does not appear to undergo enterohepatic recirculation. Mean plasma elimination half-life of atorvastatin in humans is approximately 14 hours, but the half-life of inhibitory activity for HMG-CoA reductase is 20 to 30 hours due to the contribution of active metabolites. Less than 2% of a dose of atorvastatin is recovered in urine following oral administration.

Atorvastatin is a substrate of the hepatic transporters, OATP1B1 and OATP1B3 transporter. Metabolites of atorvastatin are substrates of OATP1B1. Atorvastatin is also identified as a substrate of the efflux transporters MDR1 and BCRP, which may limit the intestinal absorption and biliary clearance of atorvastatin.

Special Populations

Elderly (≥65 years)

Plasma concentrations of atorvastatin are higher (approximately 40% for C_{\max} and 30% for AUC) in healthy elderly subjects (age ≥65 years) than in young adults. Lipid effects are comparable to that seen in younger patient populations given equal doses of atorvastatin.

Children and Adolescents

Pharmacokinetic studies have not been conducted in the paediatric population.

Gender

Plasma concentrations of atorvastatin in women differ (approximately 20% higher for C_{\max} and 10% lower for AUC) from those in men; however, there is no clinically significant difference in lipid effects with atorvastatin between men and women.

Renal Impairment

Renal disease has no influence on the plasma concentrations or lipid effects of atorvastatin; thus, dose adjustment in patients with renal dysfunction is not necessary (see sections 4.2, Dose and method of administration and 4.4, Special warnings and precautions for use).

Haemodialysis

While studies have not been conducted in patients with end-stage renal disease, haemodialysis is not expected to significantly enhance clearance of atorvastatin since the drug is extensively bound to plasma proteins.

Hepatic Impairment

Plasma concentrations of atorvastatin are markedly increased (approximately 16-fold in C_{\max} and 11-fold in AUC) in patients with chronic alcoholic liver disease (Childs-Pugh B) (see sections 4.2, Dose and method of administration, 4.3, Contraindications and 4.4, Special warnings and precautions for use).

5.3 Preclinical safety data

Genotoxicity

Atorvastatin did not demonstrate mutagenic or clastogenic potential in an appropriate battery of assays. It was negative in the Ames test with *Salmonella Typhimurium* and *Escherichia Coli*, and in the *in vitro* hypoxanthine-guanine phosphoribosyltransferase (HGPRT) forward mutation assay in Chinese hamster lung cells. Atorvastatin did not produce significant increases in chromosomal aberrations in the *in vitro* Chinese hamster lung cell assay and was negative in the *in vivo* mouse micronucleus test.

Carcinogenicity

In a 2 year study in rats given 10, 30 or 100 mg/kg/day, the incidence of hepatocellular adenoma was marginally, although not significantly, increased in females at 100 mg/kg/day. The maximum dose used was 11 times higher than the highest human dose (80 mg/kg) based on AUC₍₀₋₂₄₎ values. In a 2 year study in mice given 100, 200, or 400 mg/kg, incidences of hepatocellular adenoma in males and hepatocellular carcinoma in females were increased at 400 mg/kg. The maximum dose used was 14 times higher than the highest human dose (80 mg/kg) based on AUC₍₀₋₂₄₎ values. Other HMG-CoA reductase inhibitors have been reported to induce hepatocellular tumours in mice and rats.

6. PHARMACEUTICAL PARTICULARS

6.1 List of excipients

Calcium carbonate,
Microcrystalline cellulose,
Lactose monohydrate,
Croscarmellose sodium,
Polysorbate 80,
Hyprolose,
Magnesium stearate,
Opadry White YS-1-7040,
Simethicone Emulsion.

6.2 Incompatibilities

Incompatibilities were either not assessed or not identified as part of the registration of this medicine.

6.3 Shelf life

In Australia, information on the shelf life can be found on the public summary of the Australian Register of Therapeutic Goods (ARTG). The expiry date can be found on the packaging.

6.4 Special precautions for storage

Store below 25°C.

6.5 Nature and contents of container

LIPITOR tablets are available in foil blister packs of 10 and 30. Not all presentations may be marketed.

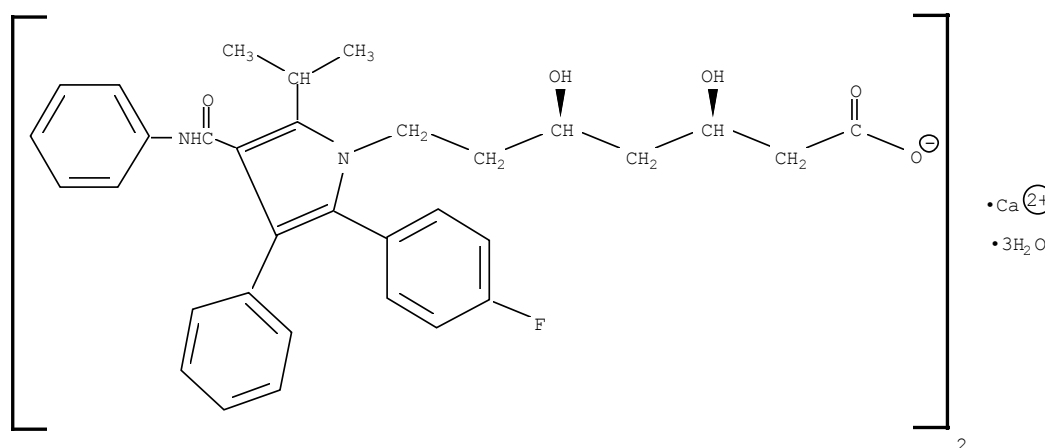
6.6 Special precautions for disposal

In Australia, any unused medicine or waste material should be disposed of by taking to your local pharmacy.

6.7 Physicochemical properties

Chemical structure

LIPITOR contains the active ingredient atorvastatin calcium. The structural formula of atorvastatin calcium is shown below:



Chemical name:

[R-(R*,R*)]-2-(4-fluorophenyl)-β,δ-dihydroxy-5-(1-methylethyl)-3-phenyl-4-[(phenylamino) carbonyl] -1H-pyrrole -1-heptanoic acid, calcium salt (2:1)

Molecular formula: $(C_{33}H_{34}FN_2O_5)_2Ca \cdot 3H_2O$

Molecular weight: 1209.42

Atorvastatin calcium is a white to off-white crystalline powder that is practically insoluble in aqueous solutions of pH 4 and below. Atorvastatin calcium is very slightly soluble in distilled water, pH 7.4 phosphate buffer, and acetonitrile, slightly soluble in ethanol and freely soluble in methanol.

CAS number

CAS registry number: 134523-03-8.

7. MEDICINE SCHEDULE (POISONS STANDARD)

Prescription only medicine (S4).

8. SPONSOR

Pfizer Australia Pty Ltd
Level 17, 151 Clarence Street
Sydney NSW 2000
Toll Free Number: 1800 675 229
www.pfizer.com.au

9. DATE OF FIRST APPROVAL

25 September 1997

10. DATE OF REVISION

05 August 2019

® Registered trademark.

SUMMARY TABLE OF CHANGES

Section changed	Summary of new information
4.2, 4.5	Changed from cyclosporin to ciclosporin (AAN)
4.2, 4.4, 4.5	Update atorvastatin to include drug interaction information with letermovir
4.8	Lupus-like syndrome and muscle rupture added under ‘post-marketing experience’